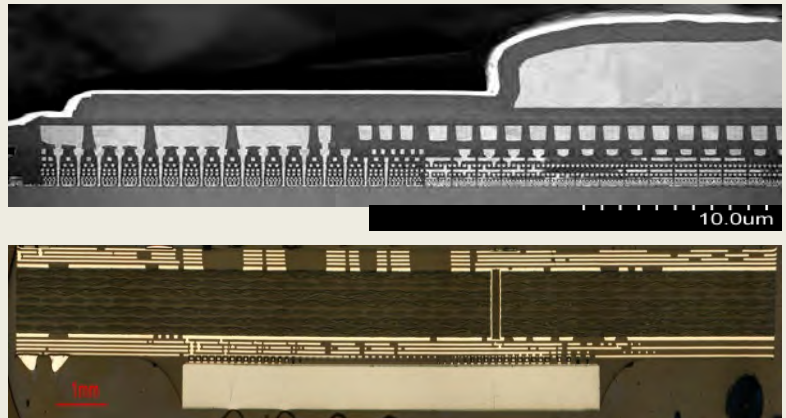


LEARN ABOUT INTEGRATED POWER MANAGEMENT WITHIN BROADWELL PROCESSOR

March 15, 2015. LTEC Corporation released its technical analysis report of the inductor structures used within the **Intel® Core™ M-5Y10** (Broadwell) processor.



Top view



Die and PCB cross-section

This twenty-five page report reveals construction details of the power inductors used within the Broadwell processor. It is a Level 1 report, designed to be followed up by customer-specific (deep-dive) report that includes in-depth information about the specifics of the fully integrated voltage regulator (FIVR).

Table of Contents

	Page
Abstract	2
Package Overview	4 – 6
Die Image	7
Specifications	8
Inductor Cross-sectional Analysis	9 – 11
Inductor Connection Analysis	12 – 25

Sales price : \$499

Note: The listed report price may not be accurate as it decreases over time.

Please contact us for current report pricing : info@ltecusa.com

18G-000D-1