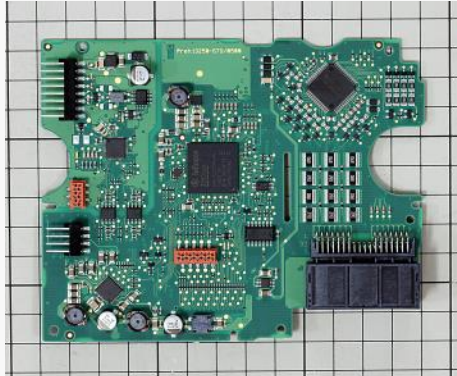
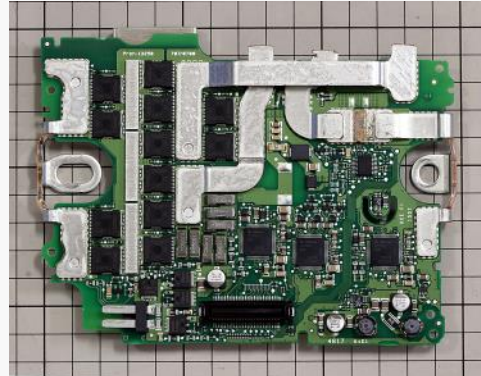


MERCEDES S450 MILD HYBRID 48V Li-ion BMS PCB TEARDOWN REPORT

February 2020. LTEC Corporation released a teardown report of the Mercedes S450 mild hybrid 48V Li-ion battery management system's PCB produced by Accumotive.



BMS control PCB



BMS Power PCB

Product outline

- The S450 is the first vehicle to adapt 48V mild hybrid system in the Mercedes-Benz brand.
- 1kWh Li-ion battery is used

Basic features

- Two PCBs (control board and power board).
- The control board includes a 16-cell battery monitor function.
- The 12-cell Li-ion battery is monitored by cell balancing system.
- A metal plate is attached to the bottom side of the power board where the back side of Power MOSFET is.

Report content

- Teardown, PCB image and component details

Sale price: \$850

Note: The report price may change over time. For current price contact info@ltecusa.com.

18G-0023-1

Table of Contents

Product information	3
Analysis summary	4
Teardown	6
Components details	10
BOM	14

