

Automotive **Sample** Report

Car name	XXXXX
Product No.	XXXXX
Product	Engine Control Unit (ECU)
Maker	XXXXX
Marking	XXXXX

IMPORTANT NOTICE

This report, request for investigation, or analysis is intended to assist our client in product development. This report is copyright protected by LTEC Corporation. Our intention is to provide accurate and reliable information to our customer. While we always aim for maximum precision, an absolute accuracy of all contents in this report cannot be guaranteed.

If contents of this report are used in patent infringement disputes, Ltec cannot accept any liability resulting from potential inaccuracies contained in this report.

CONTACT IN THE USA:

LTEC Corporation US representative Office
2280 Zanker Road No: 203
San Jose CA 95134
Phone: (408) 432-7247
Website: www.ltecusa.com
Contact: info@ltecusa.com

Content

			Page
<u>Product Information</u>			
Table1	Product information	...	3
<u>Product outline</u>			
Photo.1	ECU module	...	4
<u>Main PCB outline</u>			
Photo.2-1	Main PCB	...	5
Photo.2-2	X-Ray	...	6
Photo.2-3	Main PCB design rule	...	7
Photo.2-4	Main components position	...	8
Table2	BOM (main components)	...	9
<u>Main component</u>			
Photo.3-1	Package1 (Top View)	...	10
Photo.3-2	Package2 (Top View)	...	10
Photo.3-3	Package3 (Top View)	...	11
Photo.3-4	Package4 (Top View)	...	11
Photo.3-5	Package5 (Top View)	...	12
Photo.3-6	Package6 (Top View)	...	12
Photo.3-7	Package7 (Top View)	...	13
Photo.3-8	Package8 (Top View)	...	13
Photo.3-9	Package9 (Top View)	...	14

Products information**Table 1 Product information**

Summary	
MT	
Model	
Manufacture	XXXXXX
Model name	XXXXXX
Product No.	XXXXXX
Sold	Apr,2012
Registration	Jul,2012
Engine	Horizontally-opposed 4-cylinder DOHC
Displacement (cc)	1998
Cylinder	4

ECU Module

Manufacturer	XXXXXX
function	Engine control
Part number	-
markings	XXXXXX
size	157mm(W) x 83mm(L) x 36mm(H)
weight	290g

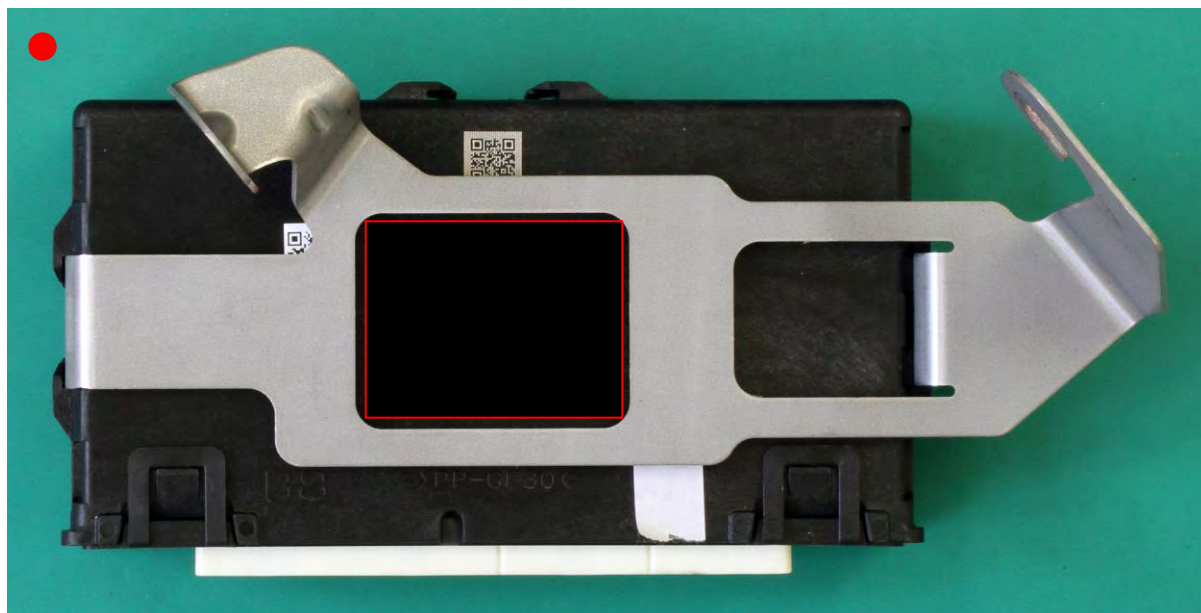
PCB

Manufacture	-
Part number	-
markings	XXXXXX
size	154mm(W) x 80mm(L) x 1.7mm(H)
Layer	4 layers
I/O Connector Pin	135 pin

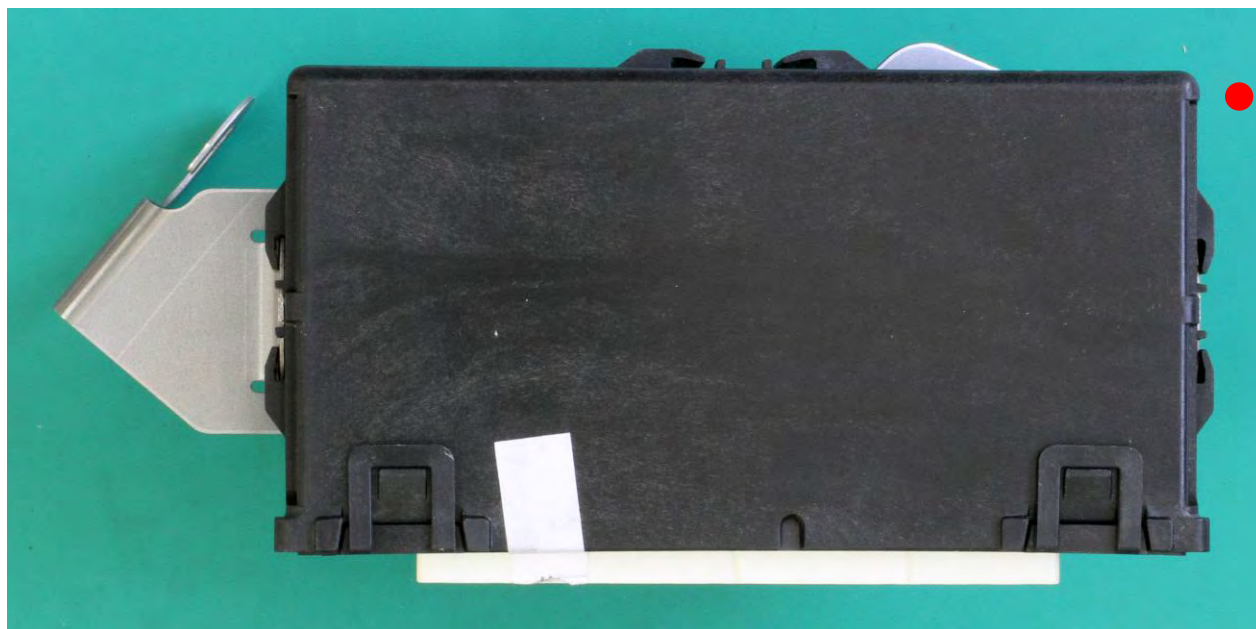
Parts

Function	count
IC	
Capacitor	
Inductor	
Resistor	
Transistor	
Diode	
Connector	
Crystal	1
No Mount	160

Product outline



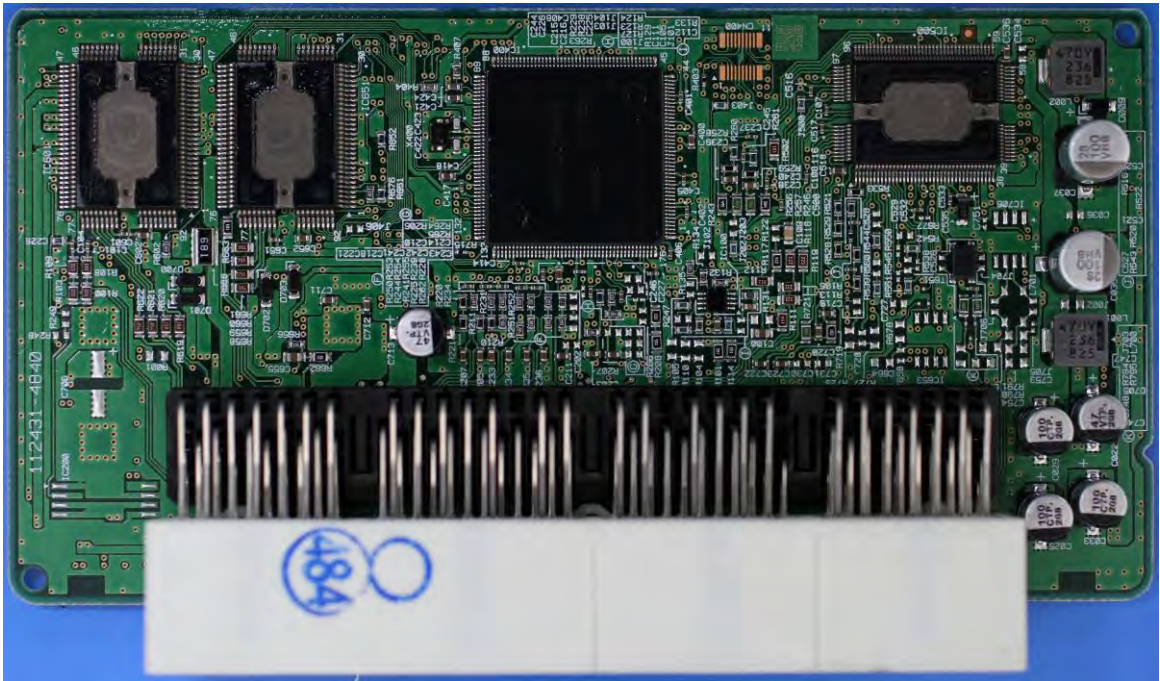
Top View



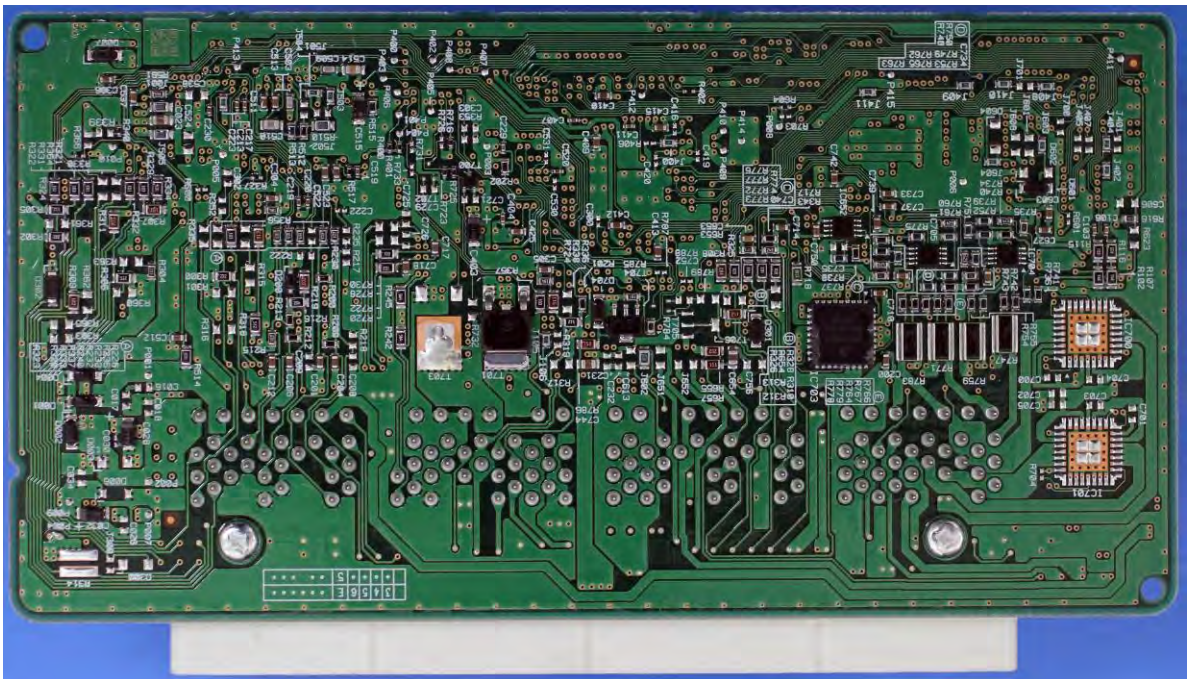
Bottom View

Photo.1 ECU module

Main PCB



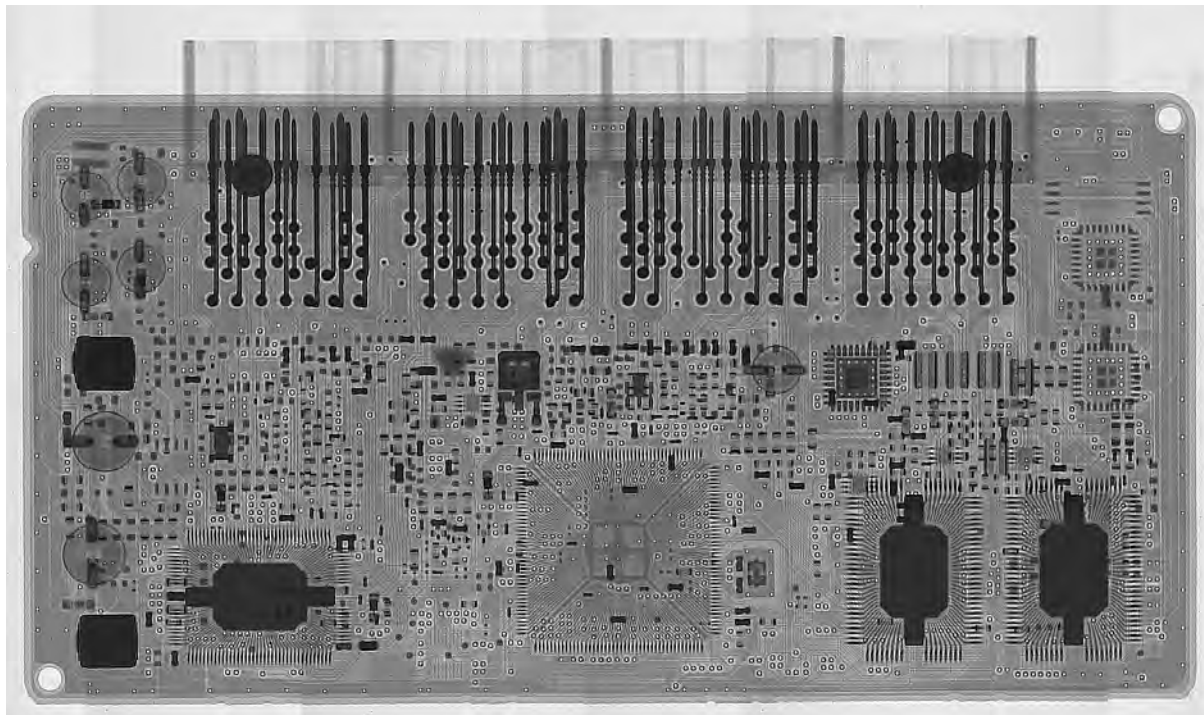
Top View



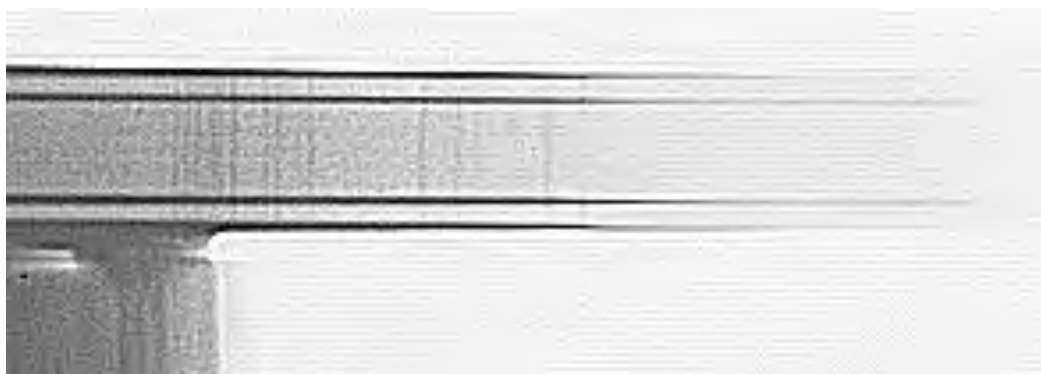
Bottom View

Photo.2-1 Main PCB

Main PCB outline



Top View



4 layers PCB

Side View

Photo.2-2 X-Ray

Main PCB outline

Main PCB design rule

Min. line width	:	
Min line space	:	
Min. via size	:	

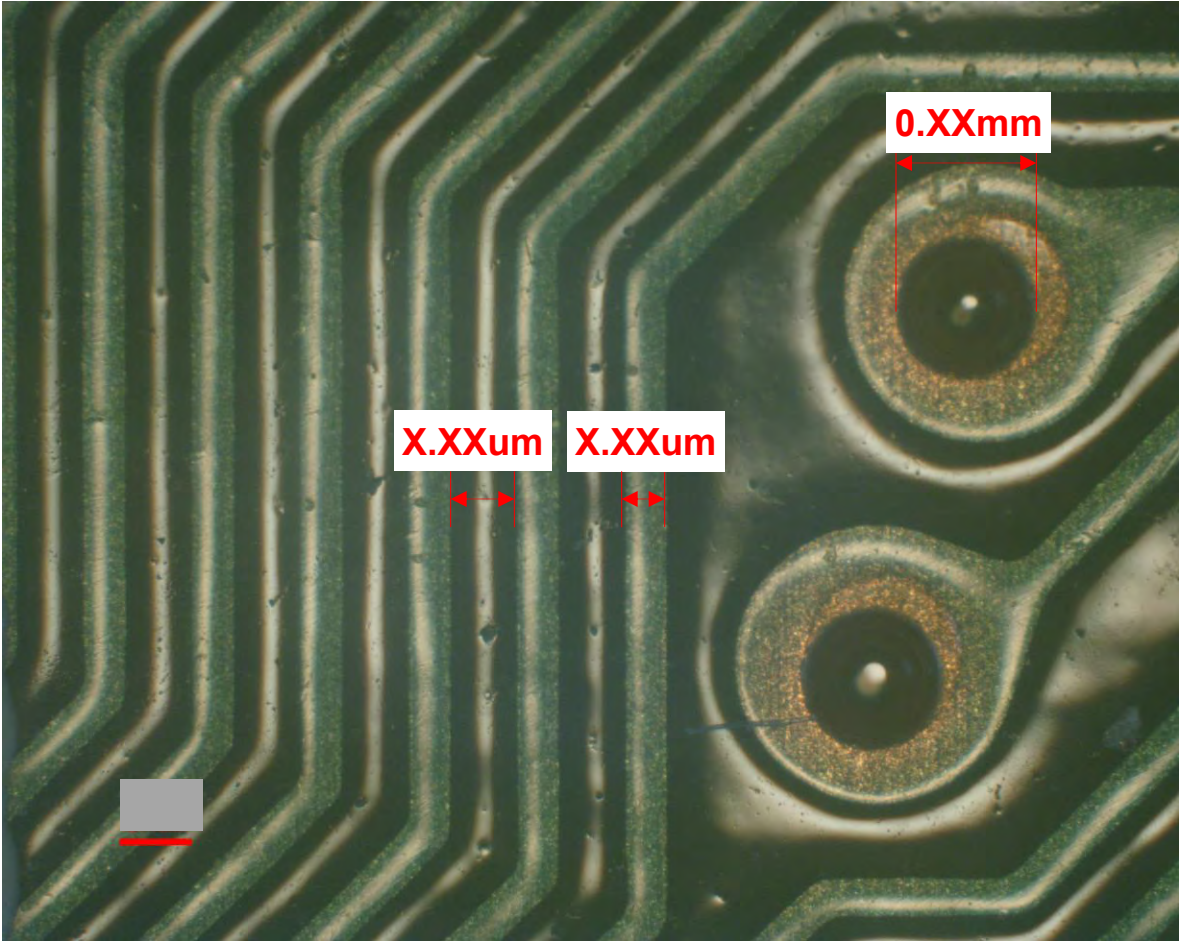
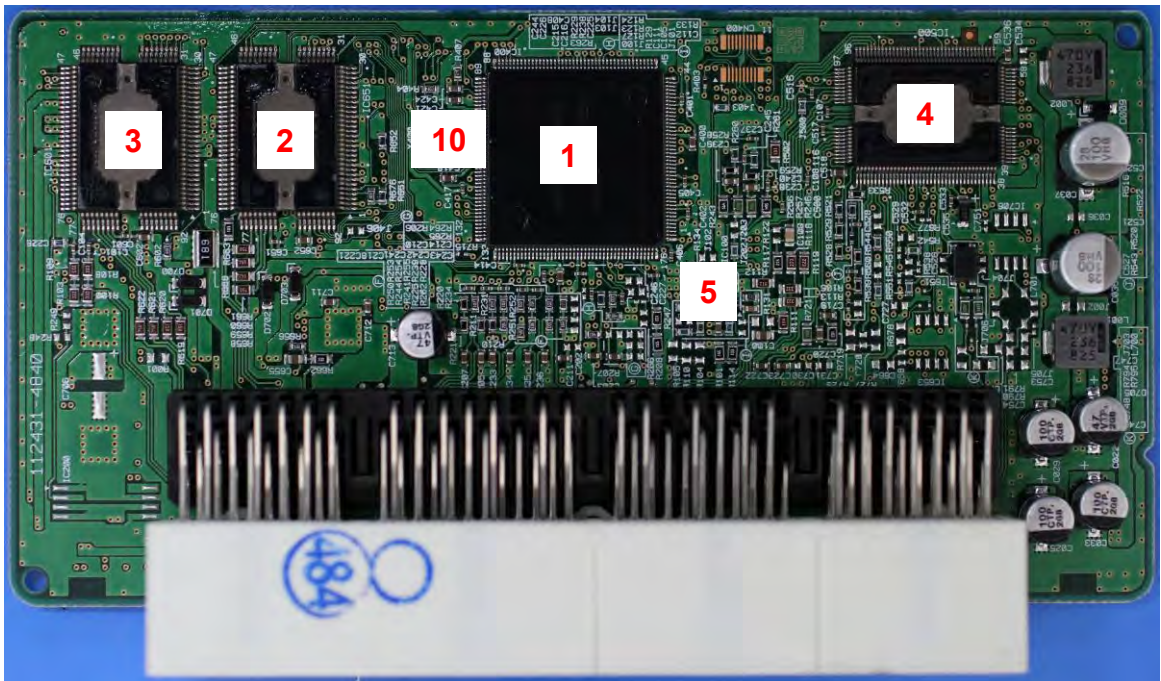
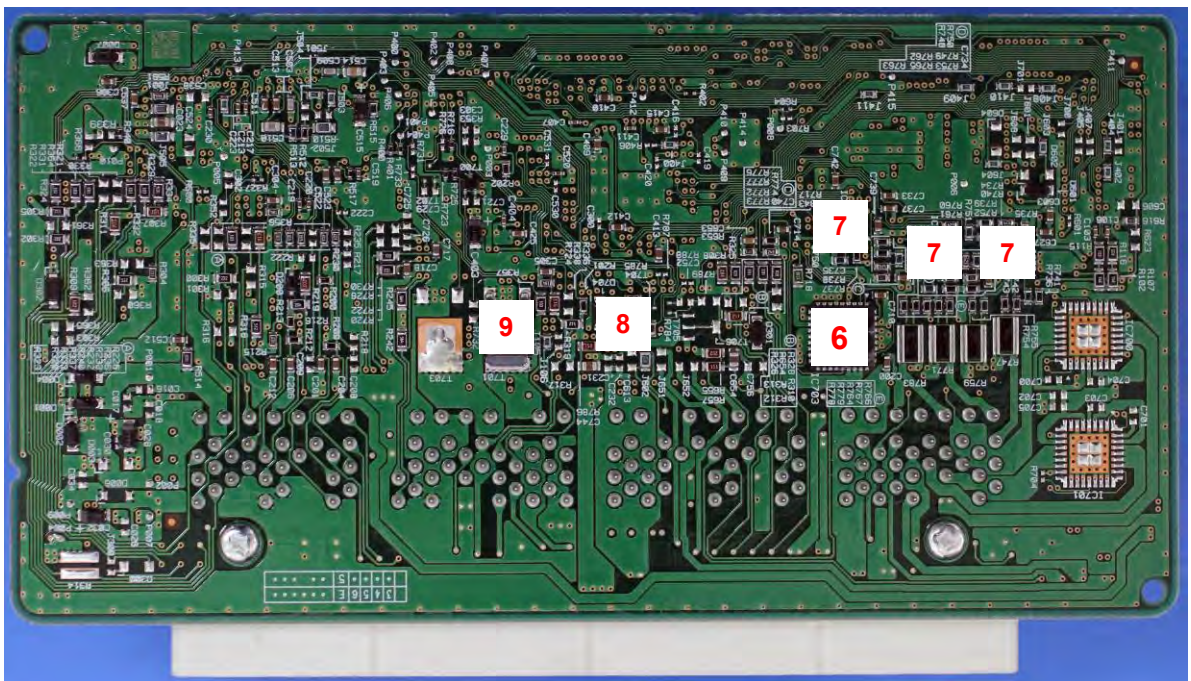


Photo 2-3. PCB design rules

Main PCB outline



Top View



Bottom View

Photo.2-4 Main components position

Main PCB outline

Table 2 BOM(Main components)

Function	Package marking	Manufacturer	Summary	Location
MCU	E8			1
H Bridge	M4C			6
Others	S9C			2
	S9C			3
	S9C			4
	S9C			5
	S9C			7
	S9C			8
	S9C			9
	S9C			10

Main component

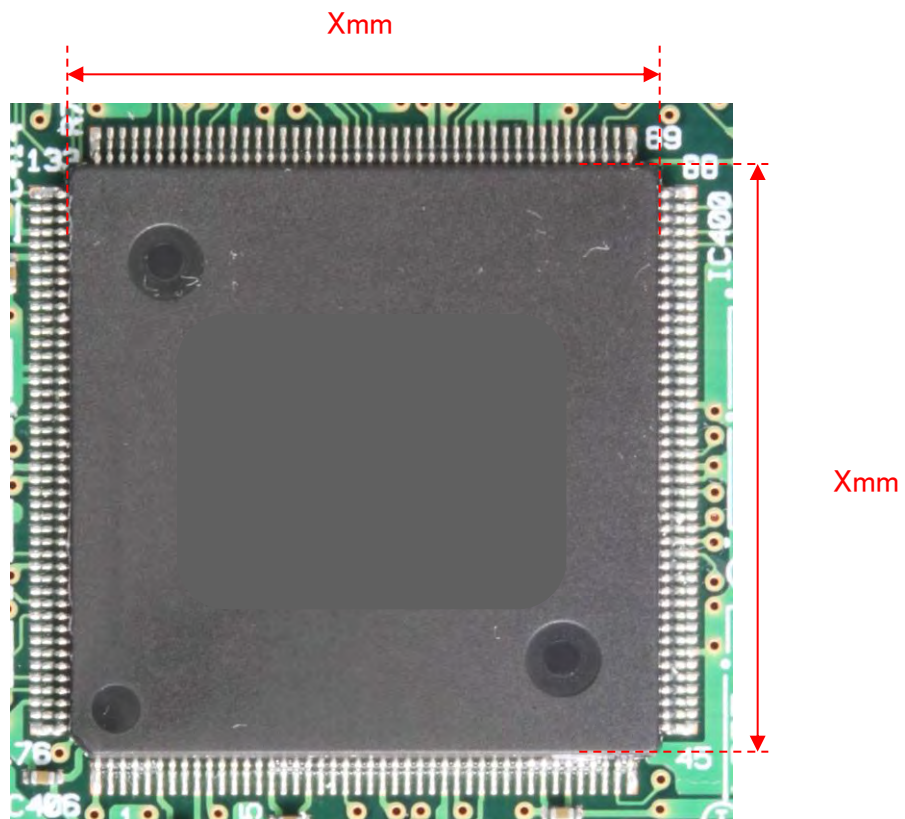


Photo.3-1 Package1 (Top View)

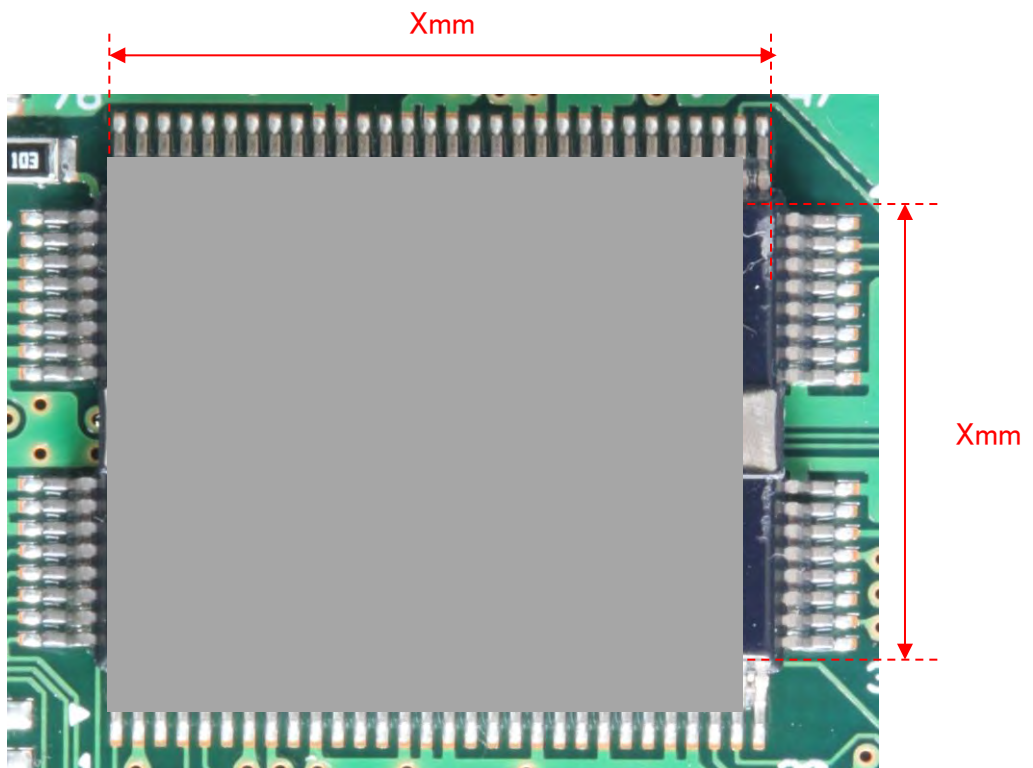
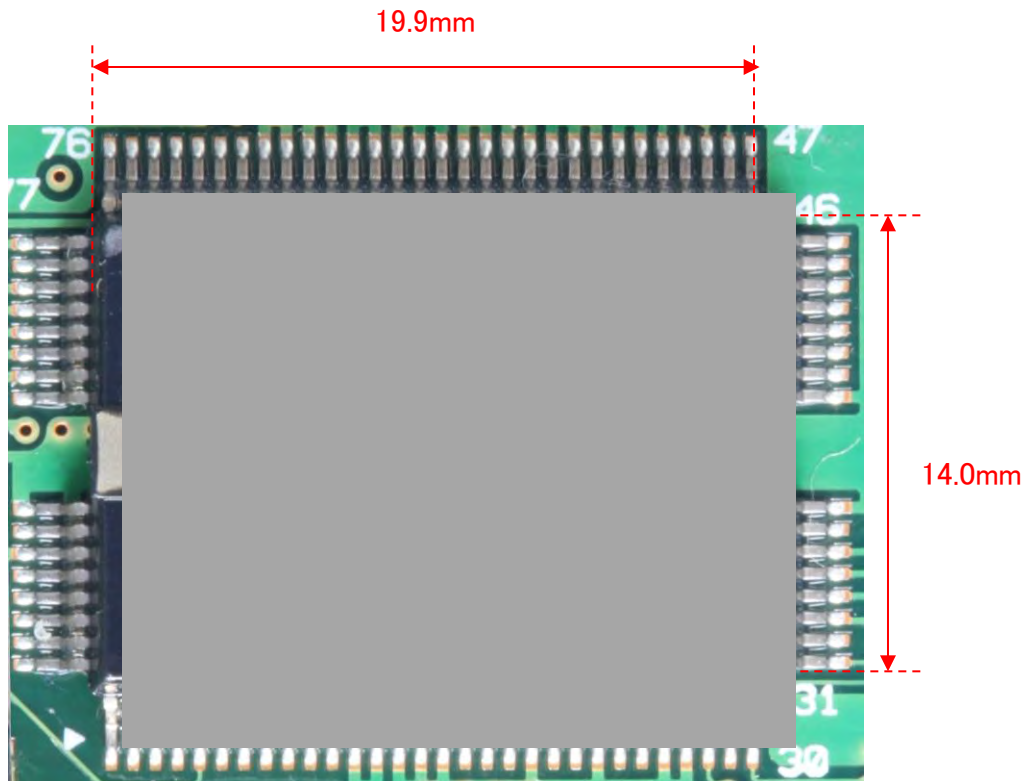
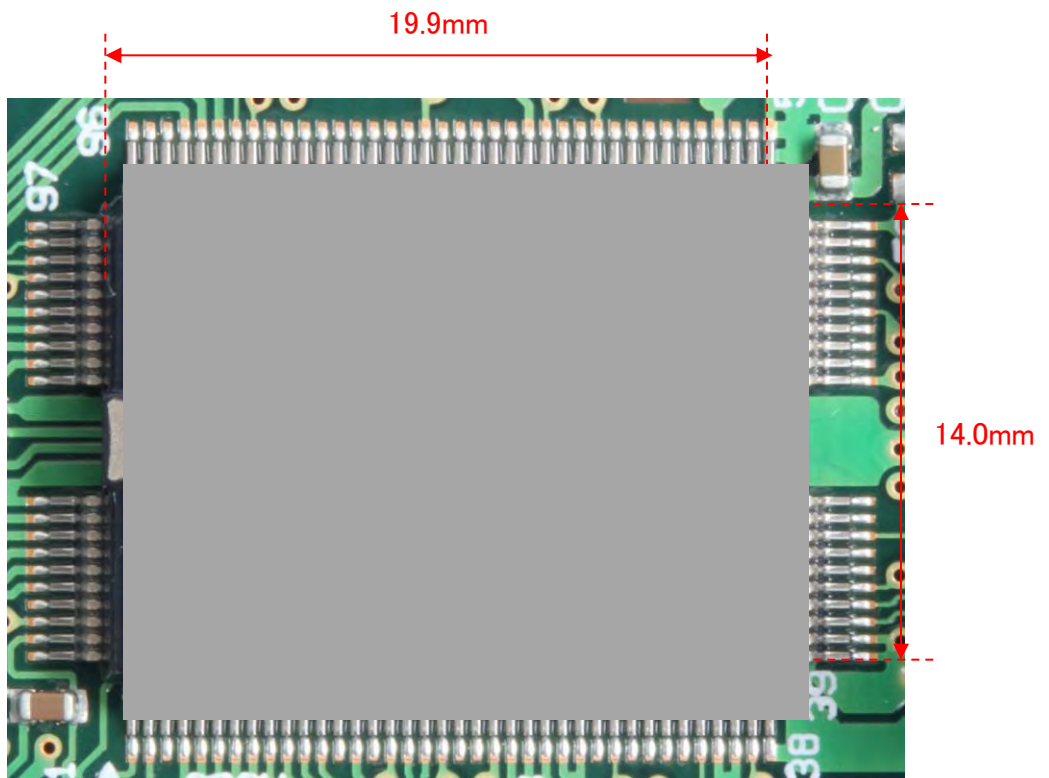
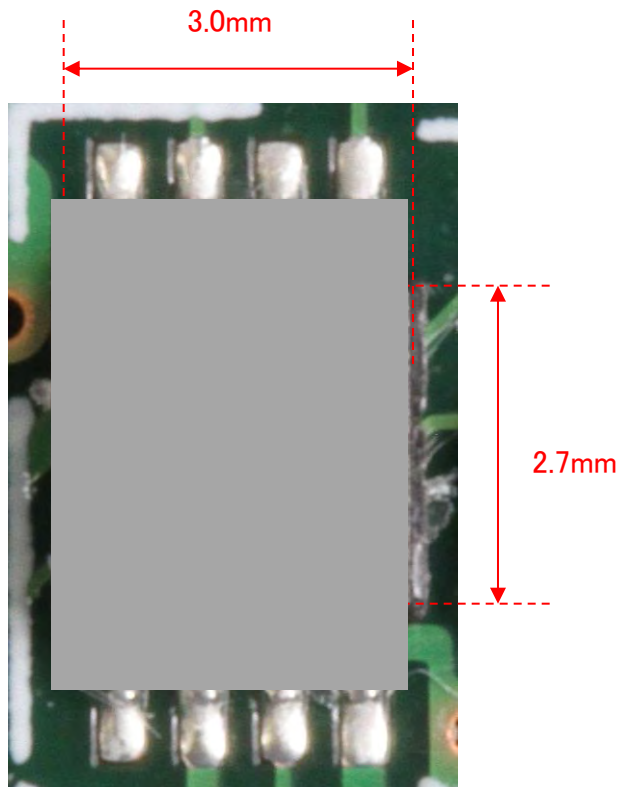
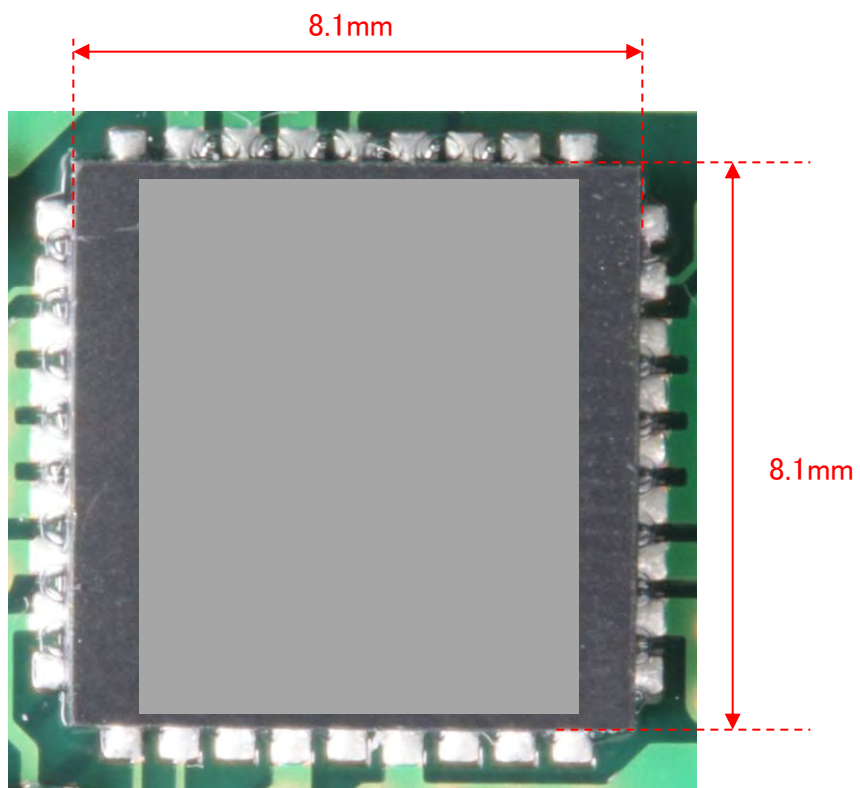


Photo.3-2 Package2 (Top View)

Main component**Photo.3-3 Package3 (Top View)****Photo.3-4 Package4 (Top View)**

Main component**Photo.3-5 Package5 (Top View)****Photo.3-6 Package6 (Top View)**

Main component

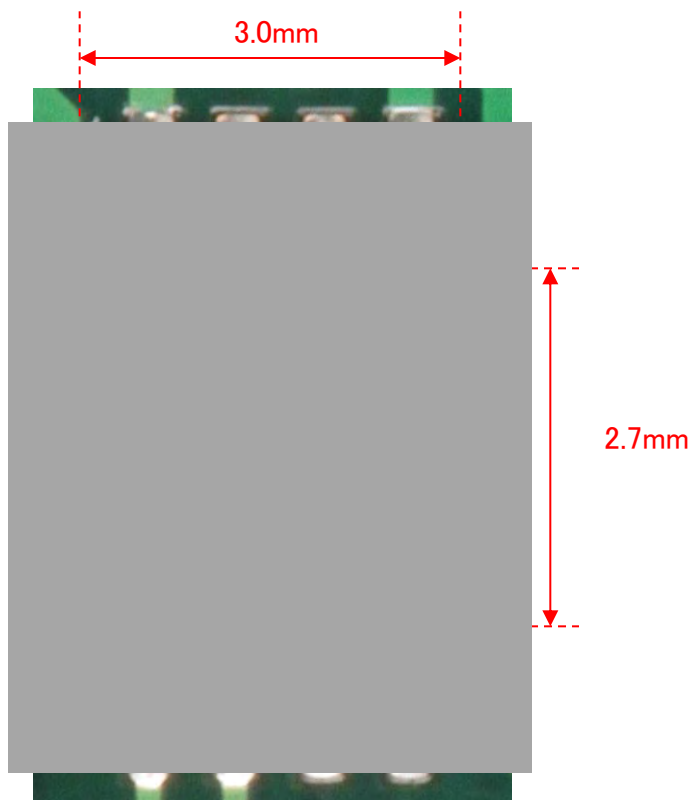


Photo.3-7 Package7 (Top View)

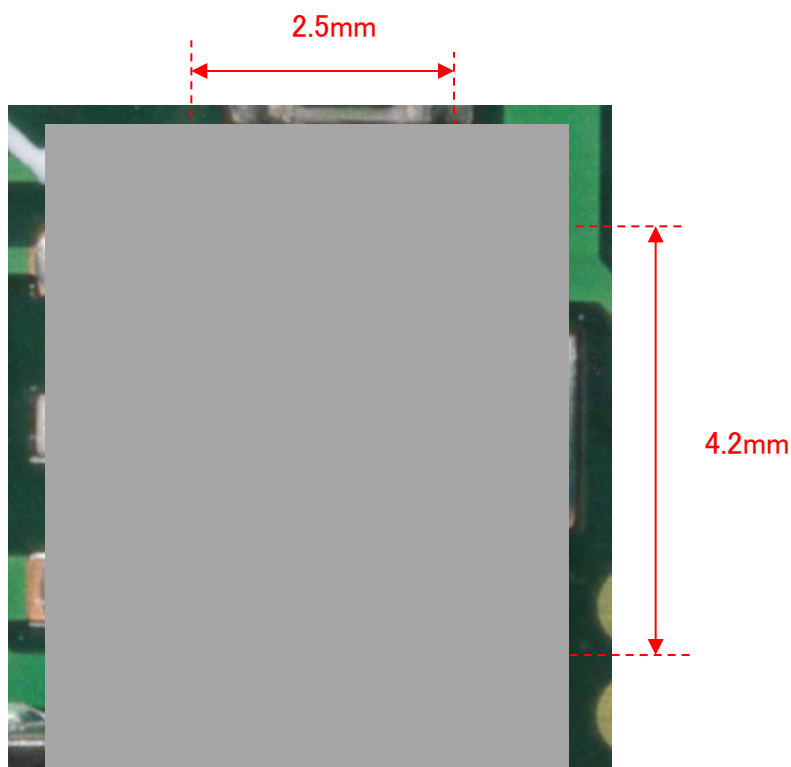


Photo.3-8 Package8 (Top View)

Main component

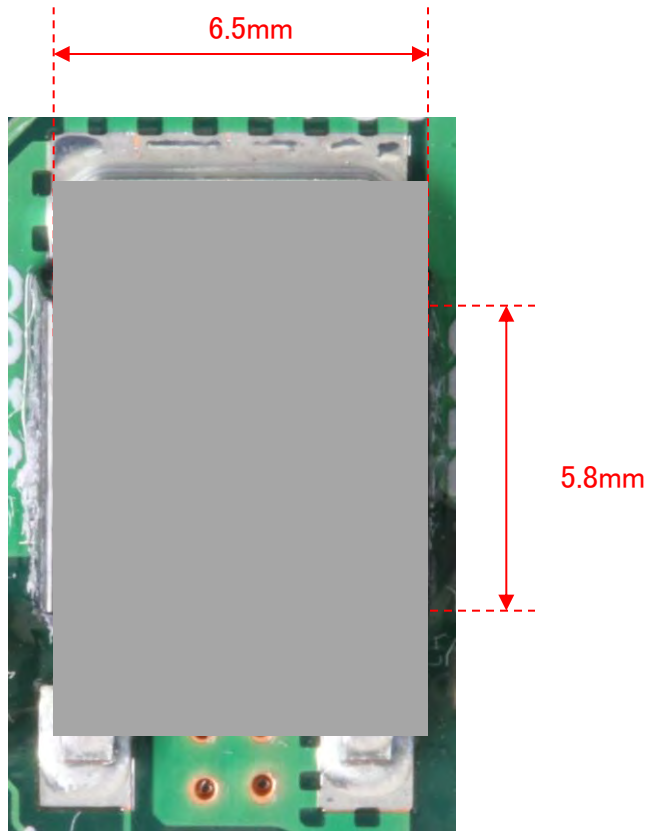


Photo.3-9 Package9 (Top View)

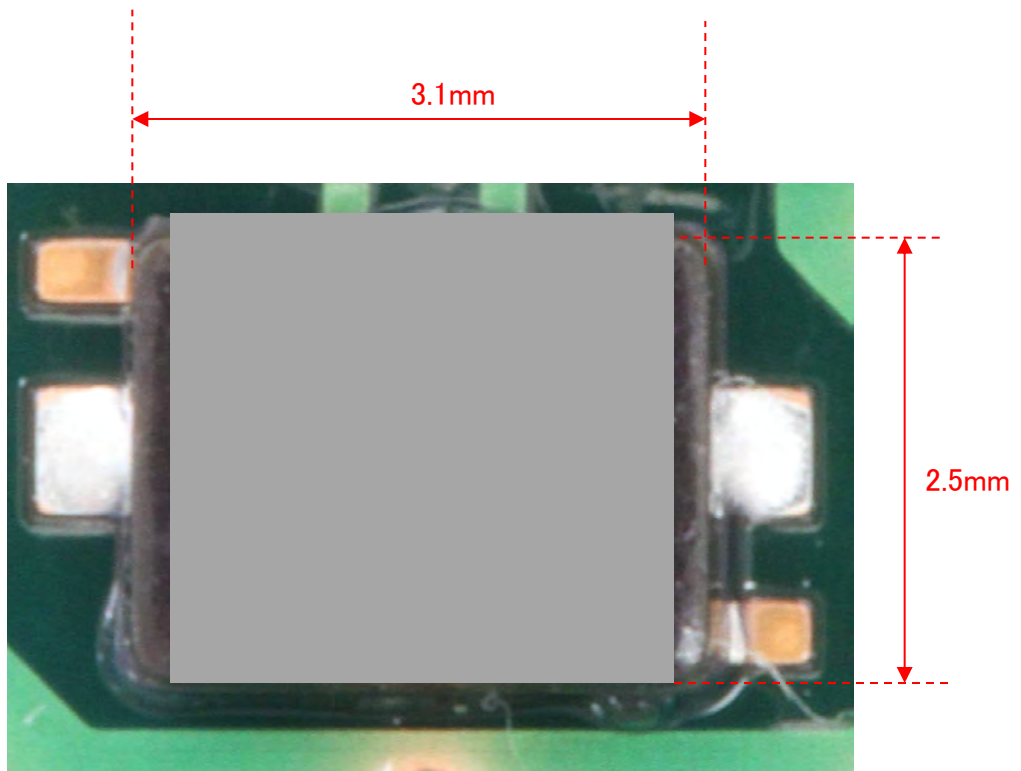


Photo.3-8 Package8 (Top View)