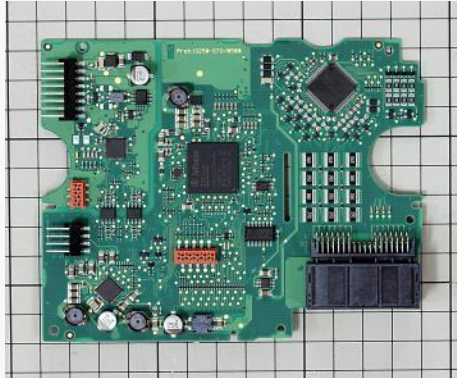
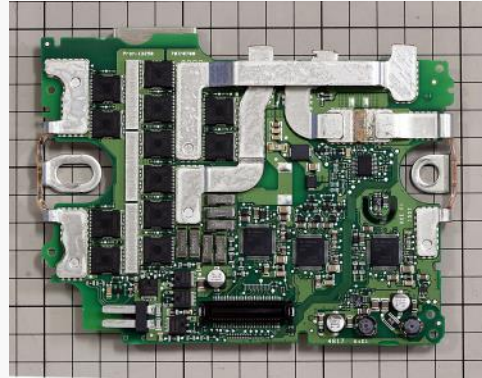


MERCEDES S450 (MILD HYBRID) 48V LIB BMS PCB TEARDOWN REPORT

July 2019. LTEC Corporation released a teardown report of the Mercedes Benz S450 mild hybrid 48V LIB BMS PCB. This PCB is produced by Accumotive.



BMS control PCB



BMS Power PCB

Product outline

- S450 is the first vehicle to adopt 48V mild hybrid system in the Mercedes-Benz brand.
- 1kWh LiB is equipped

Basic features

- It consists of two PCBs (control board and power board).
- The Control board includes 16-cell battery monitor function.
- However 12 cell LiB is monitored having cell balance function in this product.
- The metal plate is glued to the bottom side half of Power board (the back side of Power MOSFET).

Report content

- Teardown, PCB image and components details

Sale price: \$850

Note: The report price decreases over time. Contact info@ltecusa.com for current price.

18G-0023-1

Table of Contents

14 pages report

Product information	3
Analysis summary	4
Teardown	6
Components details	10
BOM	14

